

REPUBLIC OF MACEDONIA

CIVIL AVIATION AGENCY  
AERONAUTICAL INFORMATION  
SERVICE

1043 Petrovec, P.O. Box 9



АГЕНЦИЈА ЗА ЦИВИЛНО  
ВОЗДУХОПЛОВСТВО  
СЛУЖБА ЗА ВОЗДУХОПЛОВНИ  
ИНФОРМАЦИИ

1043 Петровец, П.Ф. 9

РЕПУБЛИКА МАКЕДОНИЈА

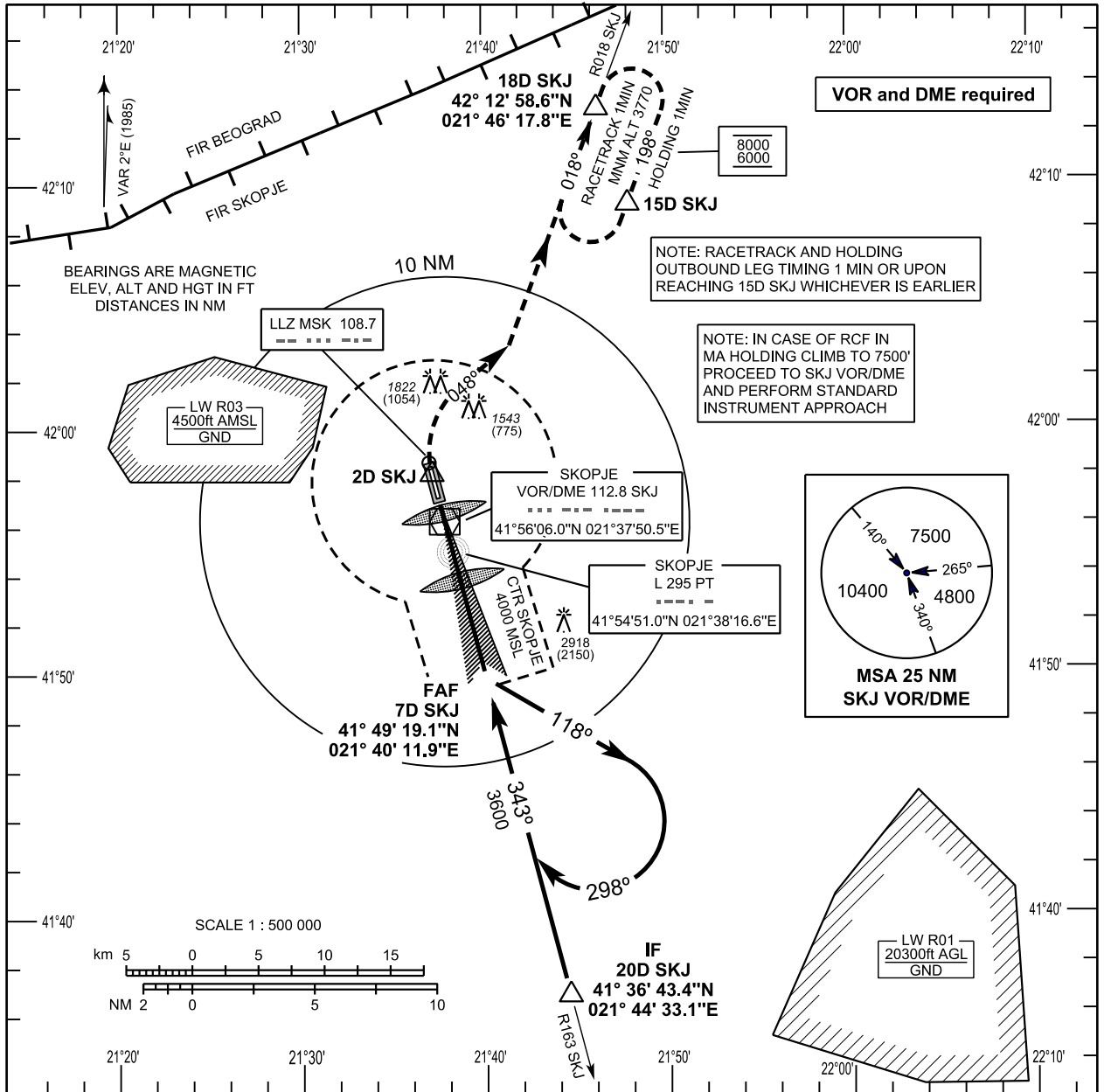
Phone: (389) 2 314 82 04, 314 81 63  
Telefax: (389) 2 311 20 26  
AFTN: LWSKYOYX

AMD AIP 52  
AIRAC 30 OCT 2014

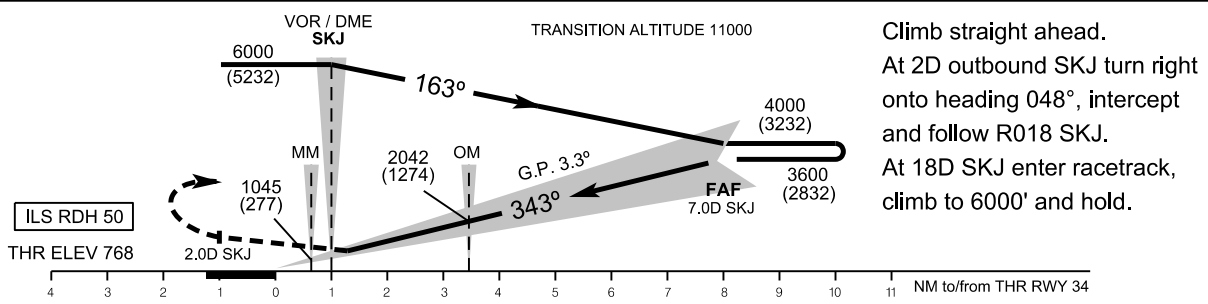
EFFECTIVE DATE  
СТАПУВА ВО СИЛА НА  
**11 DEC 2014**

| CONTENTS  |                         | СОДРЖИНА   |             |
|---|-------------------------|--|-------------|
| Additional Missed Approach Climb Gradients and new OCA/H values for ILS RWY 34 for aerodrome Alexander the Great - Skopje (LWSK). |                         | Дополнителни Missed Approach градиенти и нови OCA/H вредности за ILS RWY 34 за аеродромот Александар Велики - Скопје (LWSK). |             |
| Insert following pages or charts<br>Вметни ги следниве страници или карти   |                         | Destroy following pages or charts:<br>Уништи ги следниве страници или карти:   |             |
| GEN   |                         | GEN  |             |
| • LWSK AD 2.24-9/2.24-10  | 11 DEC 2014/28 JUL 2011 | • LWSK AD 2.24-9/2.24-10   | 28 JUL 2011 |
| • LWSK AD 2.24-11/2.24-12   | 11 DEC 2014/28 JUL 2011 | • LWSK AD 2.24-11/2.24-12  | 28 JUL 2011 |

**INSTRUMENT APPROACH CHART - ICAO**      **AERODROME ELEV 781 FT**      **APP 120.300**      **SKOPJE / ALEXANDER THE GREAT**  
**HEIGHTS RELATED TO THR RWY 34 ELEV 768 FT**      **RADAR 120.300**      **ILS RWY 34**  
**TWR 118.500**      **(ACFT CAT A, B)**



CHANGE: OCA (OCH) for additional Missed Approach Climb Gradients



Climb straight ahead.  
 At 2D outbound SKJ turn right onto heading 048°, intercept and follow R018 SKJ.  
 At 18D SKJ enter racetrack, climb to 6000' and hold.

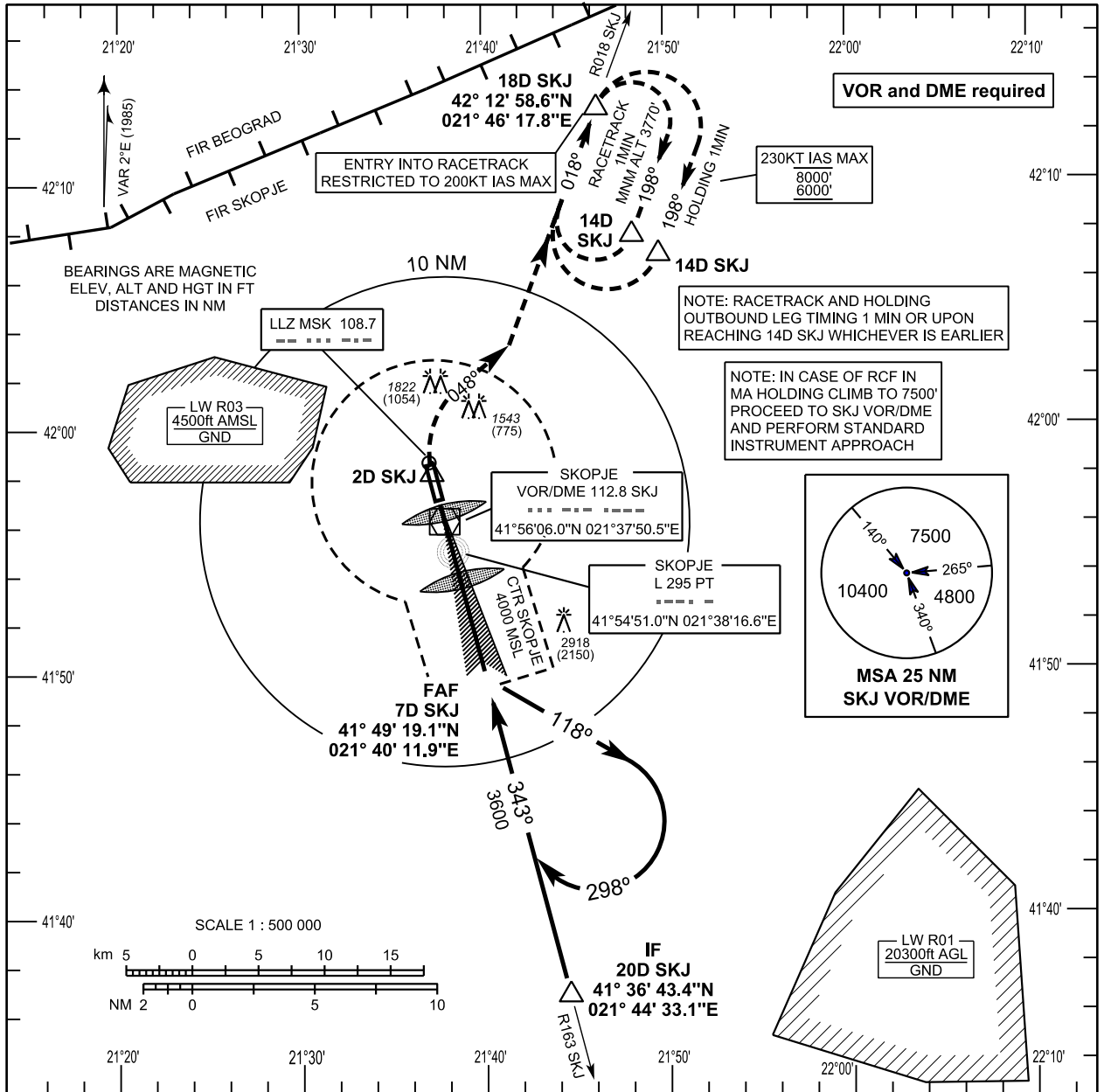
| OCA (OCH) in FT          | ILS CAT I PRESSURE ALTIMETER SETTING |            |             |            |
|--------------------------|--------------------------------------|------------|-------------|------------|
| MA Climb Gradient        | 2.5%                                 | 3.0%       | 4.0%        | 5.0%       |
| A                        | 1275 (507)                           | 1197 (429) | 1065 (297)  | 1034 (266) |
| B                        | 1377 (609)                           | 1277 (509) | 1107 (339)  | 1044 (276) |
| CIRCLING OCA (OCH) in FT | A                                    |            | B           |            |
|                          | 1400 (632)                           |            | 1900 (1132) |            |

| ALTITUDE (HEIGHT) RELATED TO DESCENT GRADIENT OF 5.76% ACCORDING TO VOR/DME SKJ |             |             |             |             |             |             |            |
|---|-------------|-------------|-------------|-------------|-------------|-------------|------------|
| DIST  | 7D          | 6D          | 5D          | 4D          | 3D          | 2D          | 1D         |
| ALT (HGT)   | 3600 (2832) | 3250 (2482) | 2900 (2132) | 2550 (1782) | 2200 (1432) | 1850 (1082) | 1500 (732) |

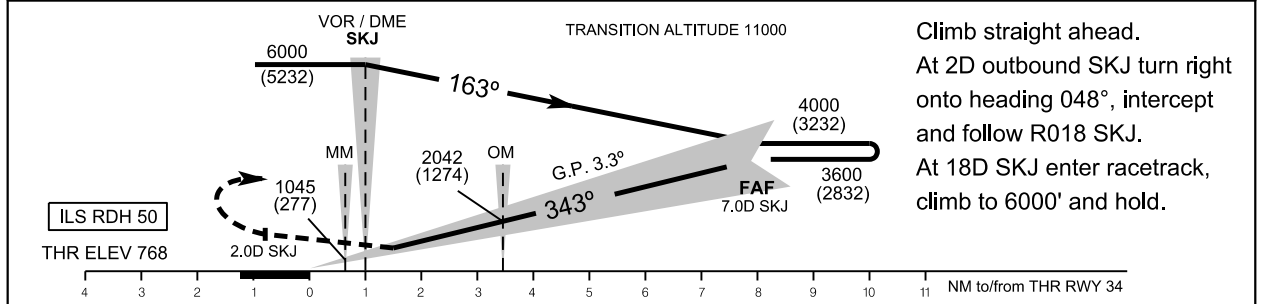
NOTE: CIRCLING NIGHT N/A

**INTENTIONALLY LEFT BLANK**

**INSTRUMENT APPROACH CHART - ICAO**      **AERODROME ELEV 781 FT**      **APP 120.300**      **SKOPJE / ALEXANDER THE GREAT**  
**HEIGHTS RELATED TO THR RWY 34 ELEV 768 FT**      **RADAR 120.300**      **ILS RWY 34**  
**TWR 118.500**      **(ACFT CAT C, D)**



CHANGE: OCA (OCH) for additional Missed Approach Climb Gradients



| OCA (OCH) in FT          | ILS CAT I PRESSURE ALTIMETER SETTING |            |             |            |
|--------------------------|--------------------------------------|------------|-------------|------------|
| MA Climb Gradient        | 2.5%                                 | 3.0%       | 4.0%        | 5.0%       |
| C                        | 1388 (620)                           | 1288 (520) | 1118 (350)  | 1055 (287) |
| D                        | 1398 (630)                           | 1298 (530) | 1128 (360)  | 1065 (297) |
| CIRCLING OCA (OCH) in FT | C                                    |            | D           |            |
|                          | 2200 (1432)                          |            | 3000 (2232) |            |

| ALTITUDE (HEIGHT) RELATED TO DESCENT GRADIENT OF 5.76% ACCORDING TO VOR/DME SKJ |             |             |             |             |             |             |            |
|---|-------------|-------------|-------------|-------------|-------------|-------------|------------|
| DIST  | 7D          | 6D          | 5D          | 4D          | 3D          | 2D          | 1D         |
| ALT (HGT)   | 3600 (2832) | 3250 (2482) | 2900 (2132) | 2550 (1782) | 2200 (1432) | 1850 (1082) | 1500 (732) |

NOTE: CIRCLING NIGHT N/A

**INTENTIONALLY LEFT BLANK**