

REPUBLIC OF MACEDONIA

CIVIL AVIATION
AGENCY

AERONAUTICAL INFORMATION
SERVICE

Bosfor 7, Mralino 1041 Ilinden



АГЕНЦИЈА ЗА ЦИВИЛНО
ВОЗДУХОПЛОВСТВО

СЛУЖБА ЗА ВОЗДУХОПЛОВНИ
ИНФОРМАЦИИ

Босфор 7, Мралино 1041 Илинден

РЕПУБЛИКА МАКЕДОНИЈА

Phone: (389) 2 314 81 59, 314 81 63
Telefax: (389) 2 311 20 26
AFTN: LWSKYOYX

AMD AIP 59
AIRAC 27 OCT 2016

EFFECTIVE DATE
СТАПУВА ВО СИЛА НА
08 DEC 2016

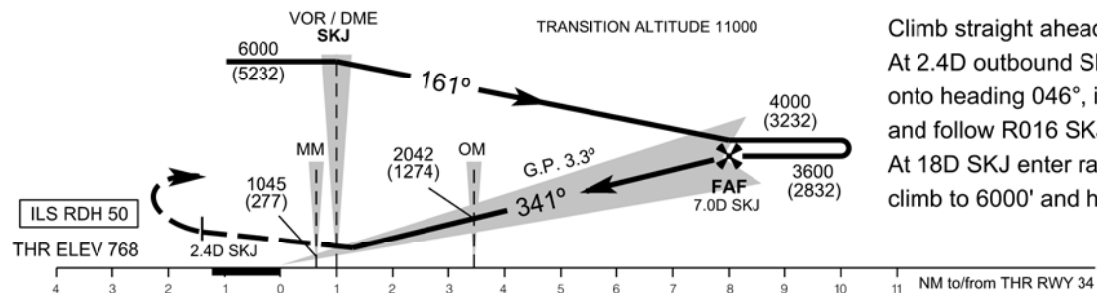
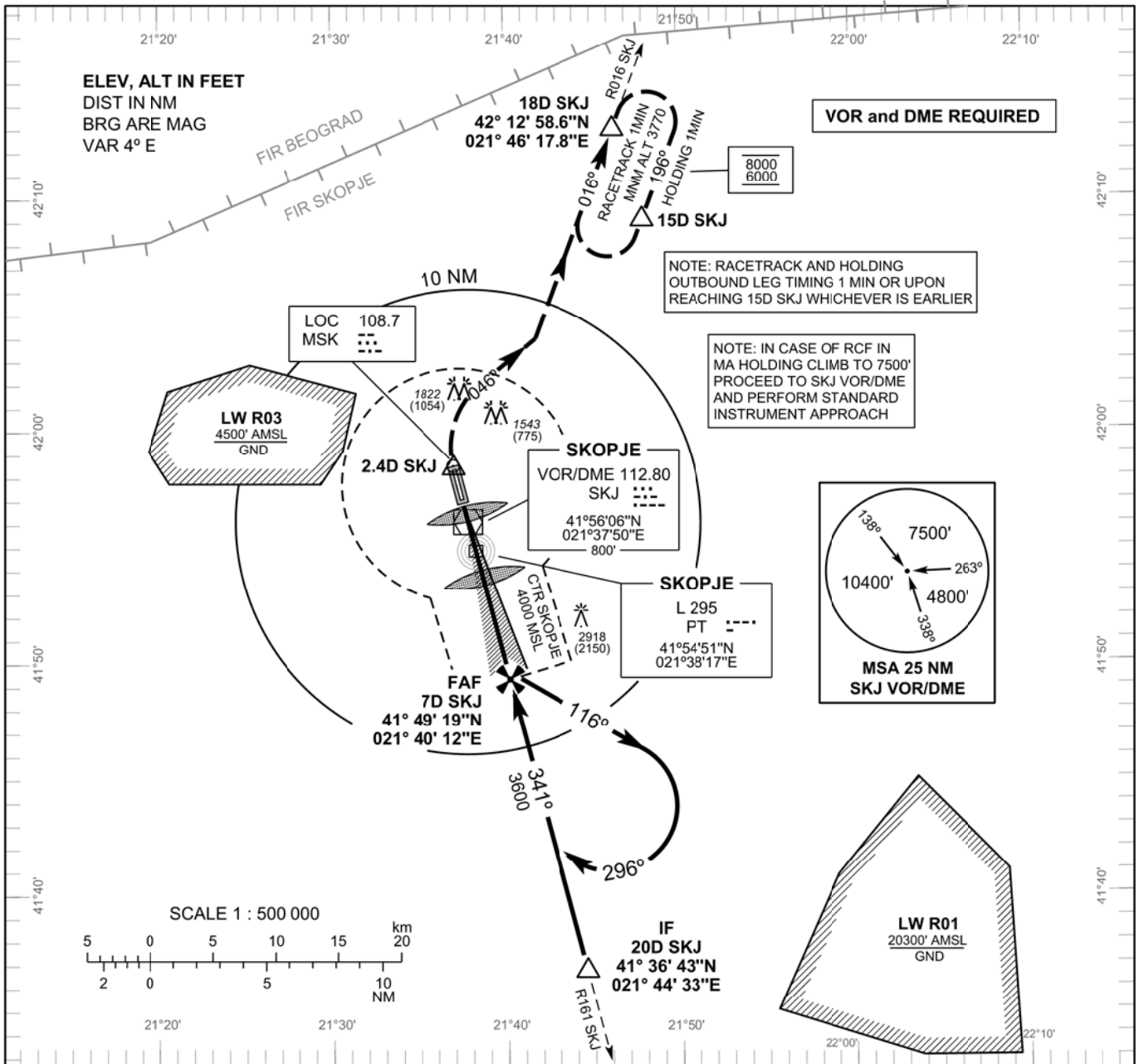
CONTENTS		СОДРЖИНА	
New MA TP and revised OCA/H for instrument approach ILS RWY 34 for LWSK (Skopje/Alexander the Great)		Нова МА ТР и промена на ОСА/Н за инструментален приод ILS RWY 34 за LWSK (Скопје/Александар Велики)	
Insert following pages or charts Вметни ги следниве страници или карти		Destroy following pages or charts: Уништи ги следниве страници или карти:	
AD		AD	
• LWSK AD 2.24-9/2.24-10	08 DEC 2016/26 MAY 2016	• LWSK AD 2.24-9/2.24-10	26 MAY 2016
• LWSK AD 2.24-11/2.24-12	08 DEC 2016/26 MAY 2016	• LWSK AD 2.24-11/2.24-12	26 MAY 2016

INSTRUMENT APPROACH CHART - ICAO

AERODROME ELEV 781 FT
HEIGHTS RELATED TO THR RWY 34 ELEV 768 FT

TWR	118.500
APP	120.300
RADAR	120.300

SKOPJE / Alexander the Great (LWSK)
ILS RWY 34
(ACFT CAT A, B)



Climb straight ahead.
 At 2.4D outbound SKJ turn right onto heading 046°, intercept and follow R016 SKJ.
 At 18D SKJ enter racetrack, climb to 6000' and hold.

OCA (OCH) in FT	ILS CAT I PRESSURE ALTIMETER SETTING			
MA Climb Gradient	2.5%	3.0%	4.0%	5.0%
A	1367 (599)	1267 (499)	1097 (329)	968 (200)
B	1377 (609)	1277 (509)	1107 (339)	972 (204)
CIRCLING OCA (OCH) in FT	A		B	
	1400 (632)		1900 (1132)	

ALTITUDE (HEIGHT) RELATED TO DESCENT GRADIENT OF 5.76% ACCORDING TO VOR/DME SKJ							
DIST	7D	6D	5D	4D	3D	2D	1D
ALT (HGT)	3600 (2832)	3250 (2482)	2900 (2132)	2550 (1782)	2200 (1432)	1850 (1082)	1500 (732)

NOTE: CIRCLING NIGHT N/A

CHANGE: New MA TP and revised CCA/H

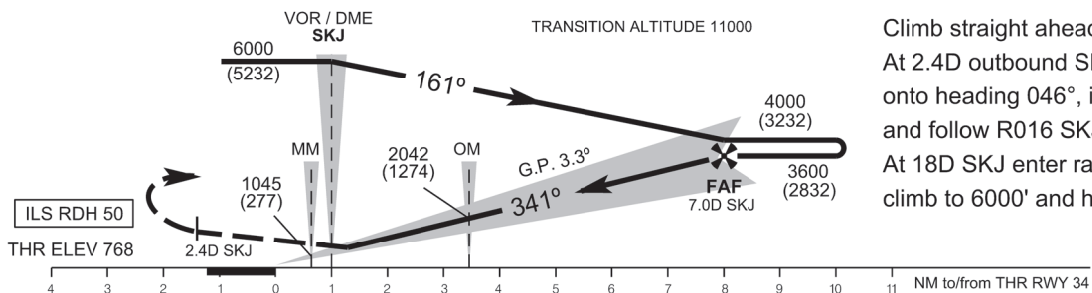
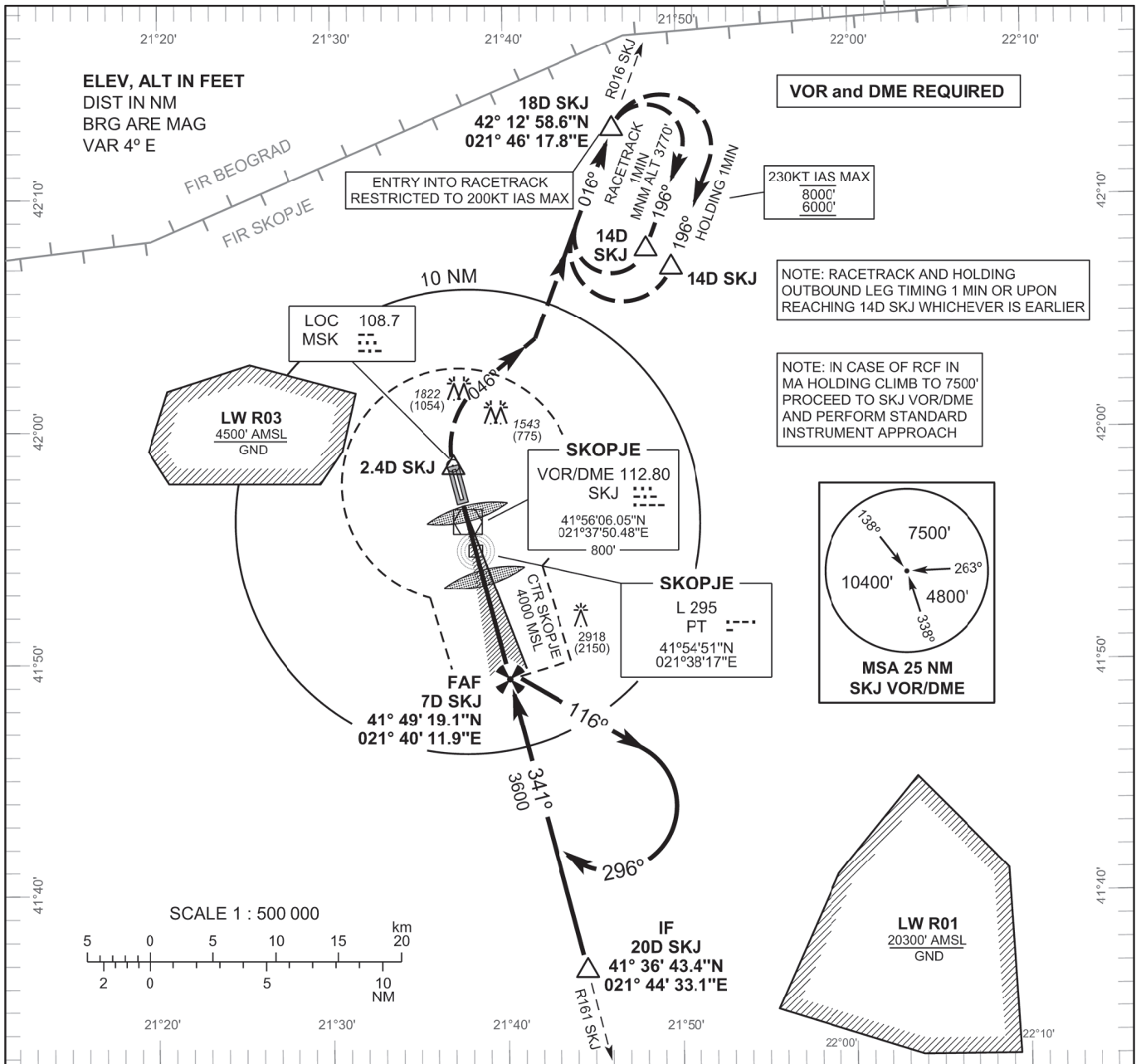
INTENTIONALLY LEFT BLANK

**INSTRUMENT
APPROACH
CHART - ICAO**

**AERODROME ELEV 781 FT
HEIGHTS RELATED TO
THR RWY 34 ELEV 768 FT**

TWR	118.500
APP	120.300
RADAR	120.300

**SKOPJE / Alexander the Great (LWSK)
ILS RWY 34
(ACFT CAT C, D)**



Climb straight ahead.
At 2.4D outbound SKJ turn right onto heading 046°, intercept and follow R016 SKJ.
At 18D SKJ enter racetrack, climb to 6000' and hold.

OCA (OCH) in FT	ILS CAT I PRESSURE ALTIMETER SETTING			
MA Climb Gradient	2.5%	3.0%	4.0%	5.0%
C	1388 (620)	1288 (520)	1118 (350)	982 (214)
D	1398 (630)	1298 (530)	1128 (360)	992 (224)
CIRCLING OCA (OCH) in FT	C		D	
	2200 (1432)		3000 (2232)	

ALTITUDE (HEIGHT) RELATED TO DESCENT GRADIENT OF 5.76% ACCORDING TO VOR/DME SKJ							
DIST	7D	6D	5D	4D	3D	2D	1D
ALT (HGT)	3600 (2832)	3250 (2482)	2900 (2132)	2550 (1782)	2200 (1432)	1850 (1082)	1500 (732)

NOTE: CIRCLING NIGHT N/A

CHANGE: New MA TP and revised OCA/H

INTENTIONALLY LEFT BLANK