

REPUBLIC OF NORTH MACEDONIA

CIVIL AVIATION
AGENCY

AERONAUTICAL INFORMATION
SERVICE

Bosfor 7, Mralino 1041 Ilinden



АГЕНЦИЈА ЗА ЦИВИЛНО
ВОЗДУХОПЛОВСТВО

СЛУЖБА ЗА ВОЗДУХОПЛОВНИ
ИНФОРМАЦИИ

Босфор 7, Мралино 1041 Илинден

РЕПУБЛИКА СЕВЕРНА МАКЕДОНИЈА

Phone: (389) 2 314 81 59, 314 81 63
Telefax: (389) 2 311 20 26
AFTN: LWSKYOYX

AMD AIP 65
AIRAC 03 JUN 2021

EFFECTIVE DATE
СТАПУВА ВО СИЛА НА
12 AUG 2021

| CONTENTS | | СОДРЖИНА | |
|---|-------------------------|--|-------------------------|
| Renaming of LWOH RWY01 SID TETOV 1 to TETOV 1C | | Преименување на LWOH RWY01 SID TETOV 1 to TETOV 1C | |
| Insert following pages or charts Вметни ги следниве страници или карти | | Destroy following pages or charts: Уништи ги следниве страници или карти: | |
| GEN | | GEN | |
| • GEN 3.2-3/4 | 30 JAN 2020/12 AUG 2021 | • GEN 3.2-3/4 | 30 JAN 2020/15 JAN 2020 |
| AD | | AD | |
| • LWOH AD 2.24-19/20 | 12 AUG 2021/15 APR 2019 | • LWOH AD 2.24-19/20 | 15 APR 2019 |

ENGLISH

MACEDONIAN

4. Index Chart
Prohibited, Restricted, Danger and
Temporary Segregated Areas
02 JAN 2020
5. Aerodrome Chart - ICAO
Aerodrome Chart - ICAO - Skopje
15 APR 2019
6. Aircraft Parking/Docking Chart - ICAO
Aircraft Parking/Docking Chart - ICAO-
Skopje
15 APR 2019
7. Standard Arrival Chart
Instrument (STAR) - ICAO - Skopje
30 JAN 2020
8. Instrument Approach Chart - ICAO - Skopje
ILS 34 CAT A, B
15 APR 2019
9. Instrument Approach Chart - ICAO - Skopje
ILS 34 CAT C, D
15 APR 2019
10. Instrument Approach Chart - ICAO - Skopje
VOR 34 CAT A, B
15 APR 2019
11. Instrument Approach Chart - ICAO - Skopje
VOR 34 CAT C, D
15 APR 2019
12. Standard Departure Chart
Instrument (SID) - ICAO - Skopje
SID 16
15 APR 2019
13. Standard Departure Chart
Instrument (SID) - ICAO - Skopje
SID 34
15 APR 2019
14. Aerodrome Obstacle Chart
ICAO Type A - Skopje
RWY 16
12 NOV 2015
15. Aerodrome Obstacle Chart
ICAO Type A - Skopje
RWY 34
12 NOV 2015
16. ATC Surveillance Minimum Altitude Chart -
ICAO - Skopje
01 DEC 2019
17. Aerodrome Chart - ICAO
Aerodrome Chart - ICAO - Ohrid
15 APR 2019
18. Aircraft Parking/Docking Chart - ICAO
Aircraft Parking/Docking Chart - ICAO-Ohrid
15 APR 2019

ENGLISH

MACEDONIAN

19. Standard Arrival Chart
Instrument (STAR) - ICAO - Ohrid
15 APR 2019
20. Instrument Approach Chart - ICAO - Ohrid
ILS 01 CAT A, B, C
15 APR 2019
21. Instrument Approach Chart - ICAO - Ohrid
Non-Standard ILS 01 CAT D
15 APR 2019
22. Instrument Approach Chart - ICAO - Ohrid
VOR 01, CAT A, B
15 APR 2019
23. Instrument Approach Chart - ICAO - Ohrid
VOR 01, CAT C
15 APR 2019
24. Instrument Approach Chart - ICAO - Ohrid
Non-Standard VOR 01, CAT D
15 APR 2019
25. Standard Departure Chart
Instrument (SID) - ICAO - Ohrid - SID 01
12 AUG 2021
26. Standard Departure Chart
Instrument (SID) - ICAO - Ohrid
SID 19 CAT A, B, C
15 APR 2019
27. Standard Departure Chart
Instrument (SID) - ICAO - Ohrid
SID 19 CAT D
15 APR 2019
28. Aerodrome Obstacle Chart
ICAO Type A - Ohrid
RWY 01/19
12 NOV 2015

3.2.6 Index to the World Aeronautical Chart (WAC) - ICAO 1: 1 000 000

3.2.6

Map 2322 is found in Appendix 5 of Annex 4 to the Convention

3.2.7 Topographical charts

3.2.7

No approved charts are currently available.

3.2.8 Corrections to charts not contained in the AIP

3.2.8

NIL - all charts available are included in the AIP.

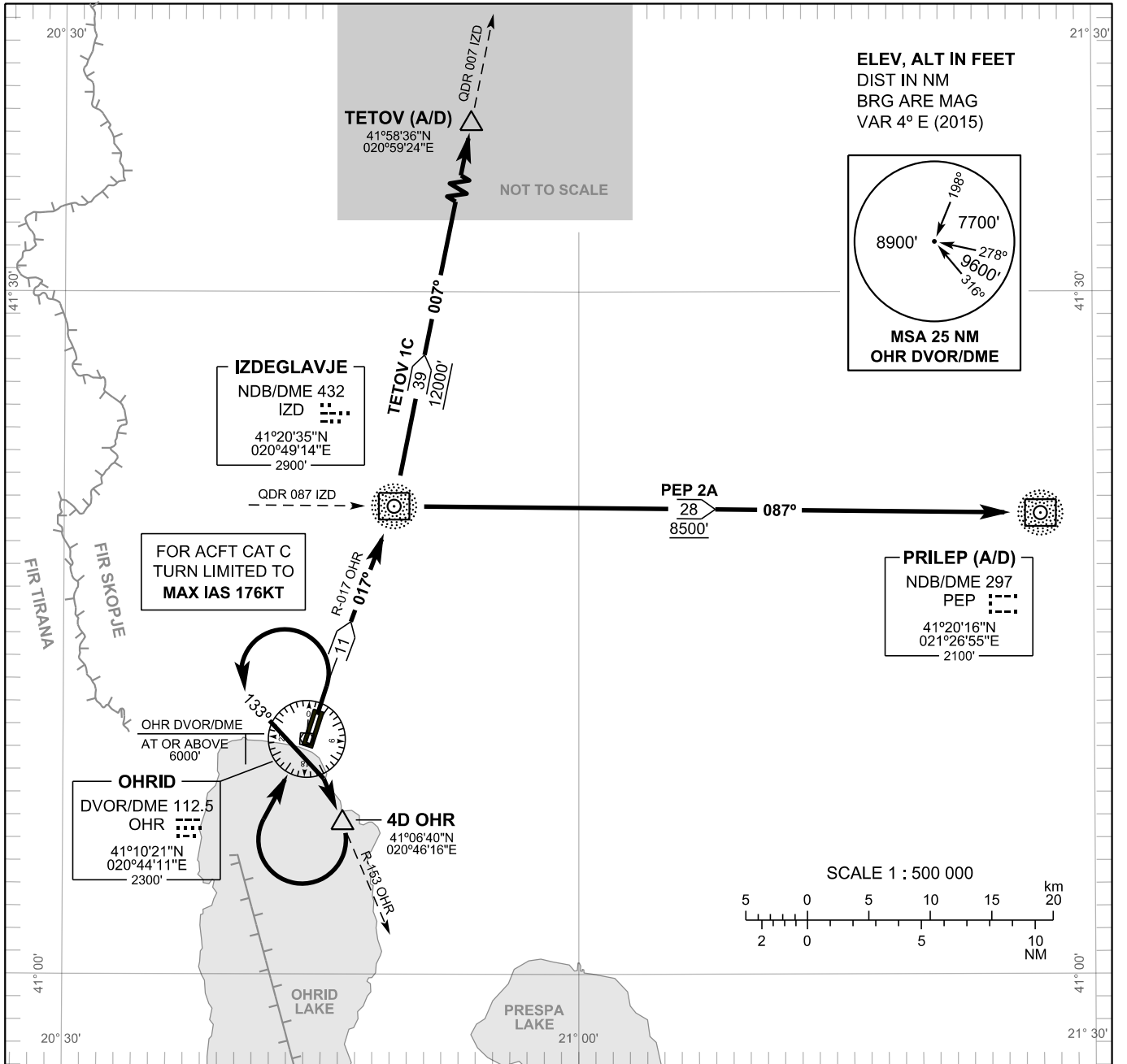
STANDARD DEPARTURE CHART - INSTRUMENT (SID) - ICAO

TRANSITION ALTITUDE
11000'

APP 119.200
TWR 119.200

**OHRID / St. Paul the Apostle (LWOH)
RWY 01
ACFT CAT A, B, C**

TETOV 1C PEP 2A



PEP 2A

CLIMB GRADIENT 4.93% (300 ft/NM).
PEP TWO ALFA DEPARTURE: Climb straight ahead. At 2690 ft turn LEFT 133° heading, intercept R-153 OHR DVOR/DME.
At 4D OHR turn RIGHT inbound OHR DVOR/DME.
Cross OHR DVOR/DME at or above 6000 ft.
Proceed on R-017 OHR to IZD NDB/DME.
Follow QDR 087° IZD NDB/DME inbound PEP NDB/DME.

TETOV 1C

CLIMB GRADIENT 4.93% (300 ft/NM).
TETOV ONE CHARLIE DEPARTURE: Climb straight ahead. At 2690 ft turn LEFT 133° heading, intercept R-153 OHR DVOR/DME.
At 4D OHR turn RIGHT inbound OHR DVOR/DME.
Cross OHR DVOR/DME at or above 6000 ft.
Proceed on R-017 OHR to IZD NDB/DME.
Follow QDR 007° IZD NDB/DME climbing to TETOV at 12000 ft.

CHANGE: Renaming TETOV 1 to TETOV 1C

INTENTIONALLY LEFT BLANK