

REPUBLIC OF NORTH MACEDONIA

CIVIL AVIATION
AGENCY

AERONAUTICAL INFORMATION
SERVICE

Bosfor 7, Mralino 1041 Ilinden



АГЕНЦИЈА ЗА ЦИВИЛНО
ВОЗДУХОПЛОВСТВО

СЛУЖБА ЗА ВОЗДУХОПЛОВНИ
ИНФОРМАЦИИ

Босфор 7, Мралино 1041 Илинден

РЕПУБЛИКА СЕВЕРНА МАКЕДОНИЈА

Phone: (+389) 2 314 81 59, 314 81 63
Telefax: (+389) 2 311 20 26

AFTN: LWSKYOYX

AMDT AIP 71

AIRAC 19 OCT 2023

EFFECTIVE DATE
СТАПУВА ВО СИЛА НА
30 NOV 2023

| CONTENTS | СОДРЖИНА |
|---|---|
| Charts updated with notes regarding VOR requirement and Use of timing for defining the MAPt | Ажурирање на картите со забелешки во однос на употреба на VOR и начин на дефинирање на MAPt |

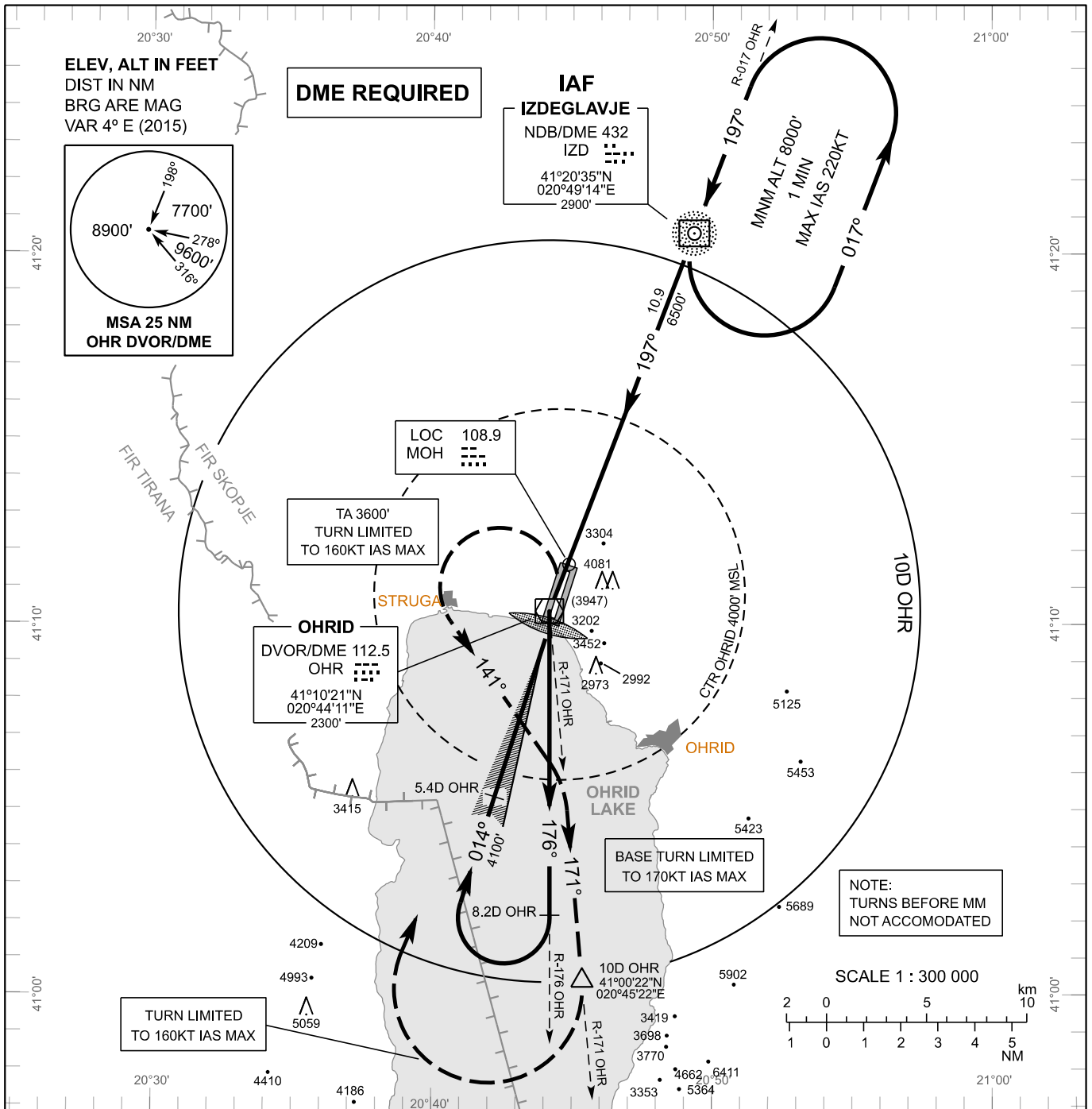
| Insert following pages or charts Вметни ги следниве страници или карти: | | Destroy following pages or charts: Уништи ги следниве страници или карти: | |
|--|---------------------------|--|-------------|
| AD | | AD | |
| • LWOH AD 2.24 - 9/10 | 30 NOV 2023 / 15 APR 2019 | • LWOH AD 2.24 - 9/10 | 15 APR 2019 |
| • LWOH AD 2.24 - 11/12 | 30 NOV 2023 / 15 APR 2019 | • LWOH AD 2.24 - 11/12 | 15 APR 2019 |
| • LWOH AD 2.24 - 13/14 | 30 NOV 2023 / 15 APR 2019 | • LWOH AD 2.24 - 13/14 | 15 APR 2019 |
| • LWOH AD 2.24 - 15/16 | 30 NOV 2023 / 15 APR 2019 | • LWOH AD 2.24 - 15/16 | 15 APR 2019 |
| • LWOH AD 2.24 - 17/18 | 30 NOV 2023 / 15 APR 2019 | • LWOH AD 2.24 - 17/18 | 15 APR 2019 |
| • LWSK AD 2.24 - 13/14 | 30 NOV 2023 / 15 APR 2019 | • LWSK AD 2.24 - 13/14 | 15 APR 2019 |
| • LWSK AD 2.24 - 15/16 | 30 NOV 2023 / 15 APR 2019 | • LWSK AD 2.24 - 15/16 | 15 APR 2019 |

**INSTRUMENT
APPROACH
CHART - ICAO**

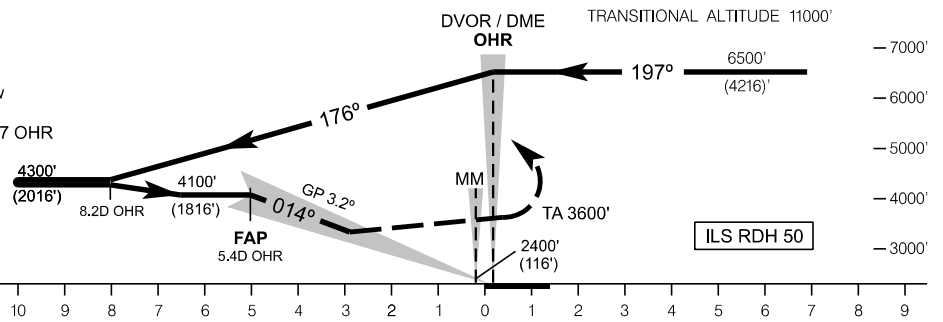
**AERODROME ELEV 2296 FT
HEIGHTS RELATED TO
THR RWY 01 ELEV 2284 FT**

APP 119.200
TWR 119.200

**OHRID / St. Paul the Apostle (LWOH)
ILS RWY 01
(ACFT CAT A, B, C)**



MISSED APPROACH
Continuous climb until reaching 8000'.
Climb straight ahead. At 3600' but not before
MM turn left heading 141° to intercept and follow
R171 OHR outbound. At 10D OHR turn right
to return to OHR. After passing OHR follow R017 OHR
to IZD NDB climbing to 8000' and hold.
NOTE: MA Speed Limit until reaching
OHR DVOR / DME 160 KT IAS MAX



| | | | |
|-----------|---------------|---------------|---------------|
| ILS CAT I | A | B | C |
| OCA (OCH) | 3337' (1054') | 3347' (1063') | 3357' (1073') |

| | | |
|---|---------------|---------------|
| Altitude (height) related to descent gradient of 5.6% | | |
| DME OHR | 5D | 4D |
| ALT (HGT) | 3973' (1689') | 3633' (1349') |

CHANGE: Note "DME REQUIRED" added

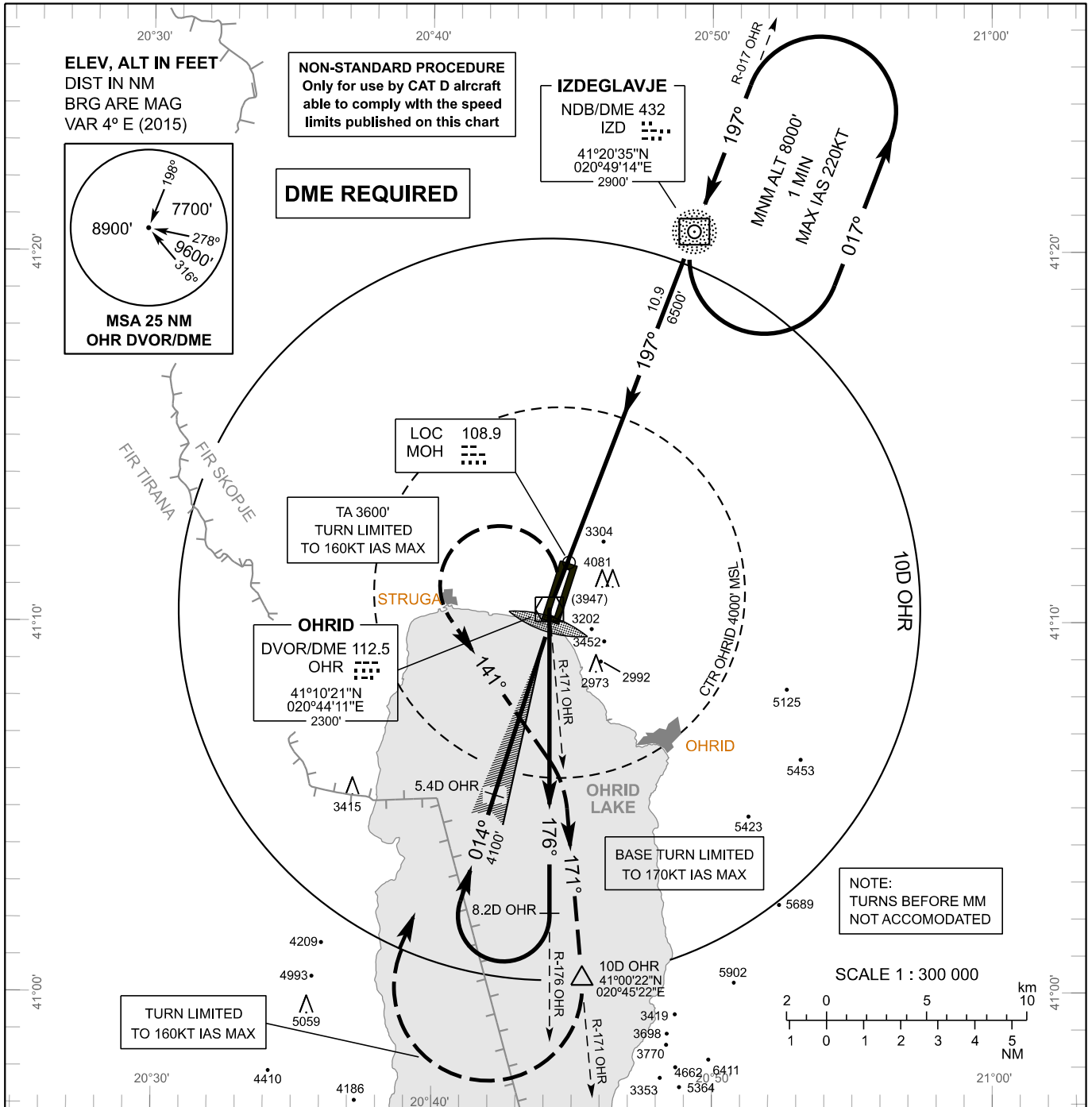
INTENTIONALLY LEFT BLANK

INSTRUMENT APPROACH CHART - ICAO

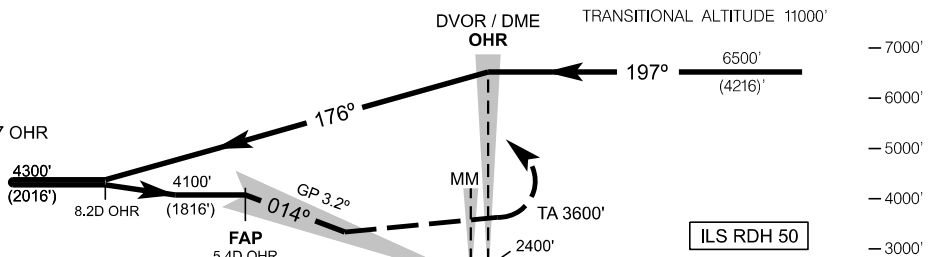
AERODROME ELEV 2296 FT
HEIGHTS RELATED TO THR RWY 01 ELEV 2284 FT

APP 119.200
 TWR 119.200

OHRID / St. Paul the Apostle (LWOH)
ILS RWY 01
(NON-STANDARD ACFT CAT D)



MISSED APPROACH
 Continuous climb until reaching 8000'.
 Climb straight ahead. At 3600' but not before
 MM turn left heading 141° to intercept and follow
 R171 OHR outbound. At 10D OHR turn right
 to return to OHR. After passing OHR follow R017 OHR
 to IZD NDB climbing to 8000' and hold.
 NOTE: MA Speed Limit until reaching
 OHR DVOR / DME 160 KT IAS MAX



THR01 ELEV 2284'
 DISTANCE NM FM THR01

| | |
|-----------|----------------------|
| ILS CAT I | D |
| OCA (OCH) | 3357' (1073') |

| Altitude (height) related to descent gradient of 5.6% | | |
|---|---------------|---------------|
| DME OHR | 5D | 4D |
| ALT (HGT) | 3973' (1689') | 3633' (1349') |

CHANGE: Note "DME REQUIRED" added

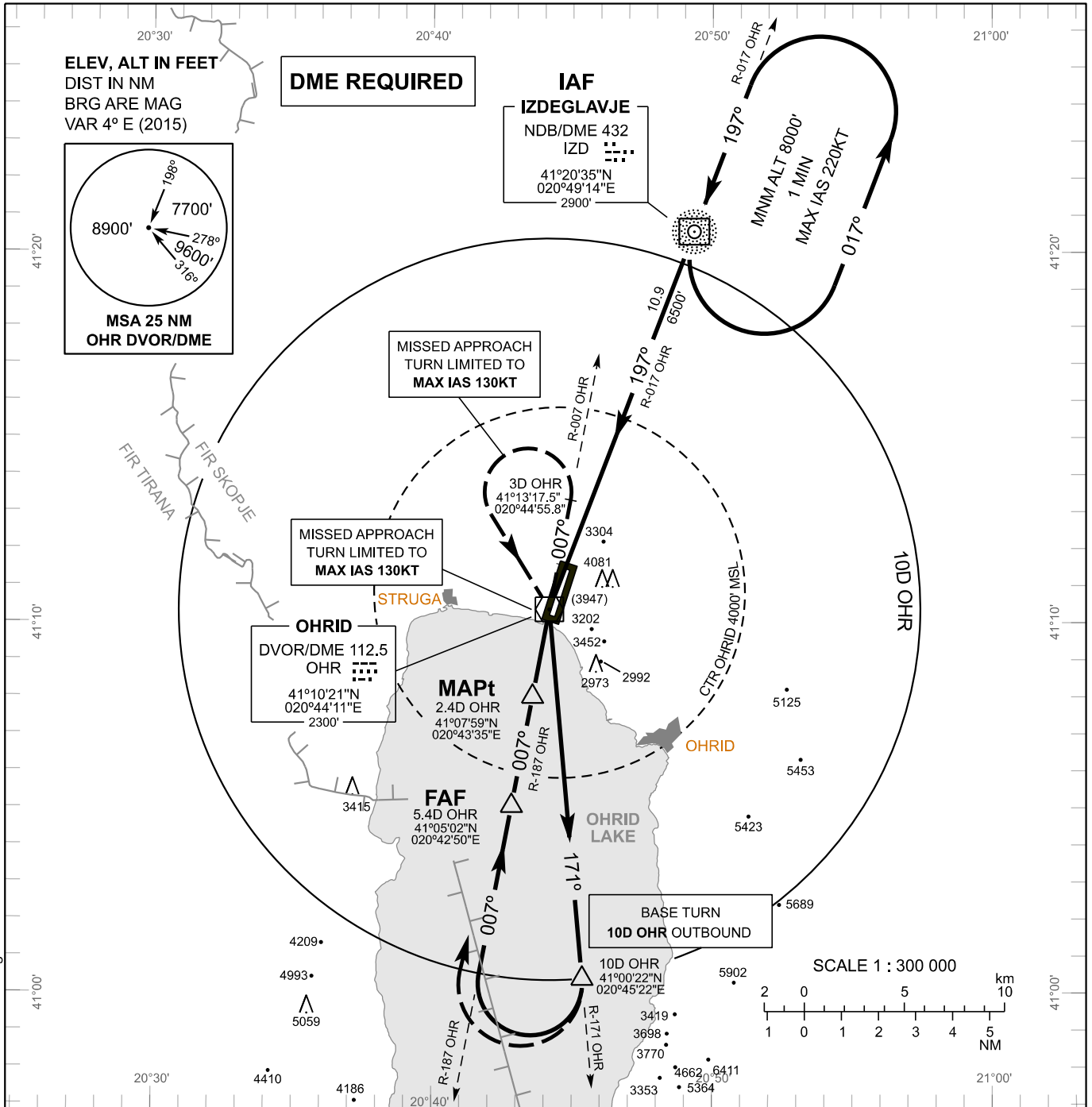
INTENTIONALLY LEFT BLANK

INSTRUMENT APPROACH CHART - ICAO

AERODROME ELEV 2296 FT
HEIGHTS RELATED TO THR RWY 01 ELEV 2284 FT

APP 119.200
 TWR 119.200

OHRID / St. Paul the Apostle (LWOH)
VOR RWY 01
(ACFT CAT A, B)

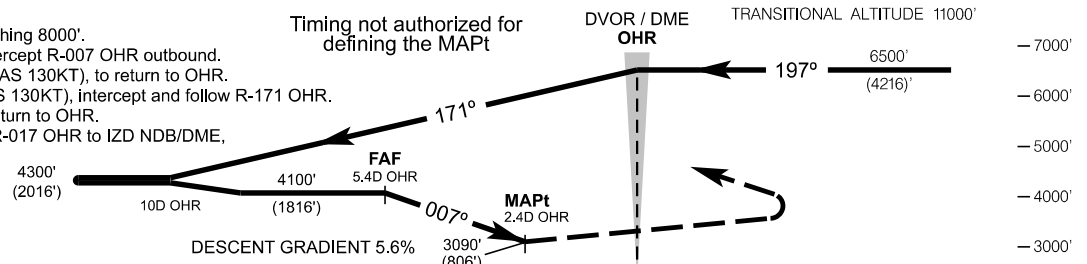


CHANGE: Notes "DME REQUIRED" and "Timing not authorized for defining the MAPt" added

MISSED APPROACH

Continuous climb until reaching 8000'.
 Climb straight ahead to intercept R-007 OHR outbound.
 At 3D OHR turn left (MAX IAS 130KT), to return to OHR.
 At OHR turn right (MAX IAS 130KT), intercept and follow R-171 OHR.
 At 10D OHR turn right to return to OHR.
 After passing OHR follow R-017 OHR to IZD NDB/DME, climbing to 8000' and hold.

Timing not authorized for defining the MAPt



THR01 ELEV 2284'
 DISTANCE NM FM OHR DVOR/DME

| | | |
|-------------|---------------------|---|
| Cat of ACFT | A | B |
| OCA (OCH) | 3090' (806') | |

| Altitude (height) related to descent gradient of 5.6% | | | | |
|---|---------------|---------------|---------------|---------------|
| DME OHR | 5.4D (FAF) | 5D | 4D | 3D |
| ALT (HGT) | 4100' (1816') | 3973' (1689') | 3633' (1349') | 3293' (1009') |
| | 3090' (806') | | | |

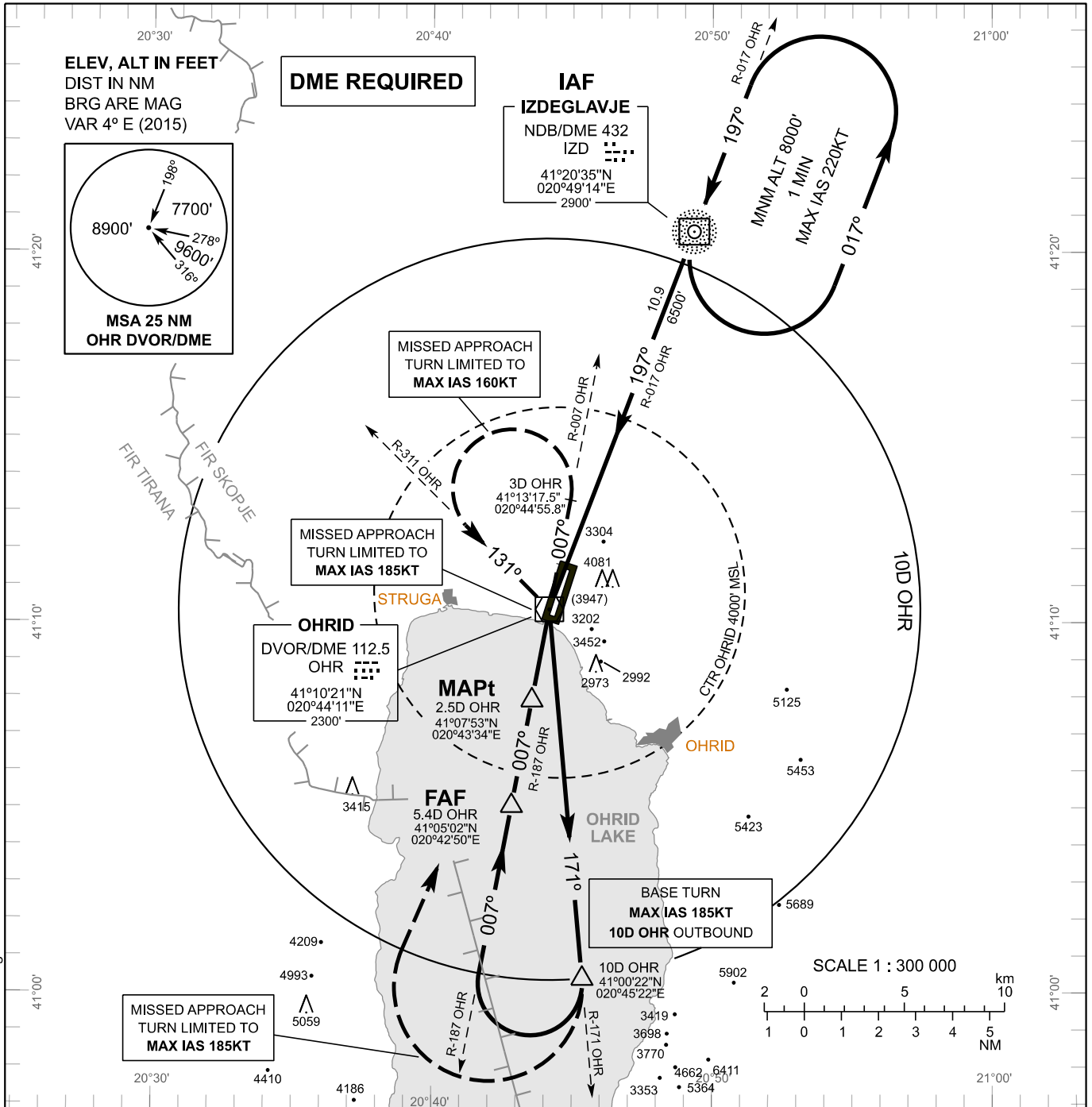
INTENTIONALLY LEFT BLANK

INSTRUMENT APPROACH CHART - ICAO

AERODROME ELEV 2296 FT
HEIGHTS RELATED TO THR RWY 01 ELEV 2284 FT

APP 119.200
 TWR 119.200

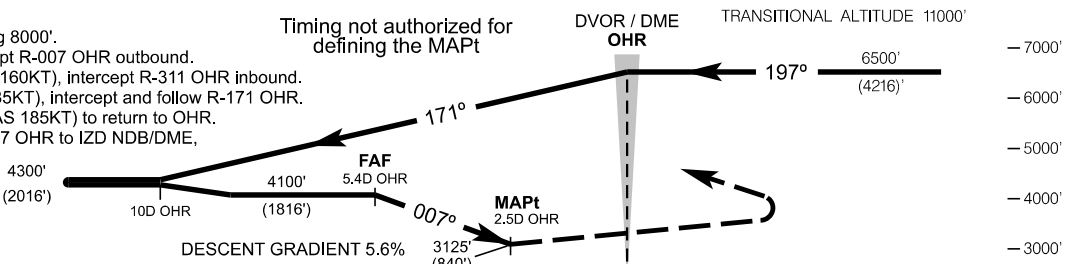
OHRID / St. Paul the Apostle (LWOH)
VOR RWY 01 (ACFT CAT C)



MISSED APPROACH

Continuous climb until reaching 8000'.
 Climb straight ahead to intercept R-007 OHR outbound.
 At 3D OHR turn left (MAX IAS 160KT), intercept R-311 OHR inbound.
 At OHR turn right (MAX IAS 185KT), intercept and follow R-171 OHR.
 At 10D OHR turn right (MAX IAS 185KT) to return to OHR.
 After passing OHR follow R-017 OHR to IZD NDB/DME, climbing to 8000' and hold.

Timing not authorized for defining the MAPt



THR01 ELEV 2284'
 DISTANCE NM FM OHR DVOR/DME

| | |
|-------------|--------------|
| Cat of ACFT | C |
| OCA (OCH) | 3125' (840') |

| Altitude (height) related to descent gradient of 5.6% | | | | | |
|---|---------------|---------------|---------------|---------------|--------------|
| DME OHR | 5.4D (FAF) | 5D | 4D | 3D | 2.5D (MAPt) |
| ALT (HGT) | 4100' (1816') | 3973' (1689') | 3633' (1349') | 3293' (1009') | 3125' (840') |

CHANGE: Notes "DME REQUIRED" and "Timing not authorized for defining the MAPt" added

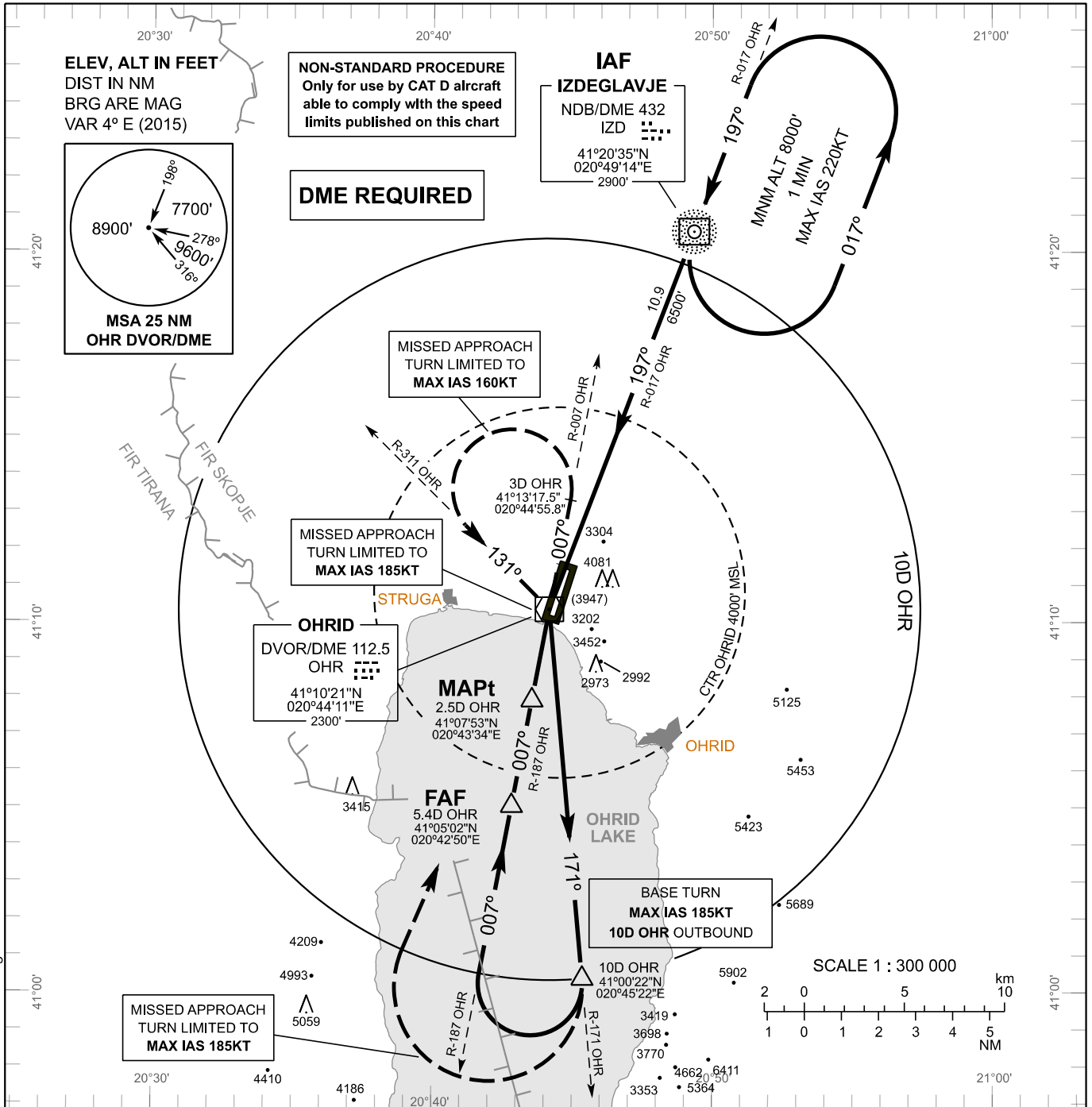
INTENTIONALLY LEFT BLANK

INSTRUMENT APPROACH CHART - ICAO

AERODROME ELEV 2296 FT
HEIGHTS RELATED TO THR RWY 01 ELEV 2284 FT

APP 119.200
 TWR 119.200

OHRID / St. Paul the Apostle (LWOH)
VOR RWY 01
(NON-STANDARD ACFT CAT D)



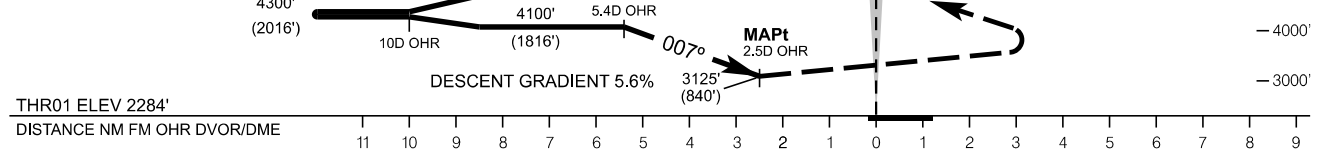
CHANGE: Notes "DME REQUIRED" and "Timing not authorized for defining the MAPt" added

MISSED APPROACH
 Continuous climb until reaching 8000'.
 Climb straight ahead to intercept R-007 OHR outbound.
 At 3D OHR turn left (MAX IAS 160KT), intercept R-311 OHR inbound.
 At OHR turn right (MAX IAS 185KT), intercept and follow R-171 OHR.
 At 10D OHR turn right (MAX IAS 185KT) to return to OHR.
 After passing OHR follow R-017 OHR to IZD NDB/DME, climbing to 8000' and hold.

Timing not authorized for defining the MAPt

DVOR / DME OHR

TRANSITIONAL ALTITUDE 11000'



| | |
|-------------|---------------------|
| Cat of ACFT | D |
| OCA (OCH) | 3125' (840') |

| Altitude (height) related to descent gradient of 5.6% | | | | | |
|---|---------------|---------------|---------------|---------------|--------------|
| DME OHR | 5.4D (FAF) | 5D | 4D | 3D | 2.5D (MAPt) |
| ALT (HGT) | 4100' (1816') | 3973' (1689') | 3633' (1349') | 3293' (1009') | 3125' (840') |

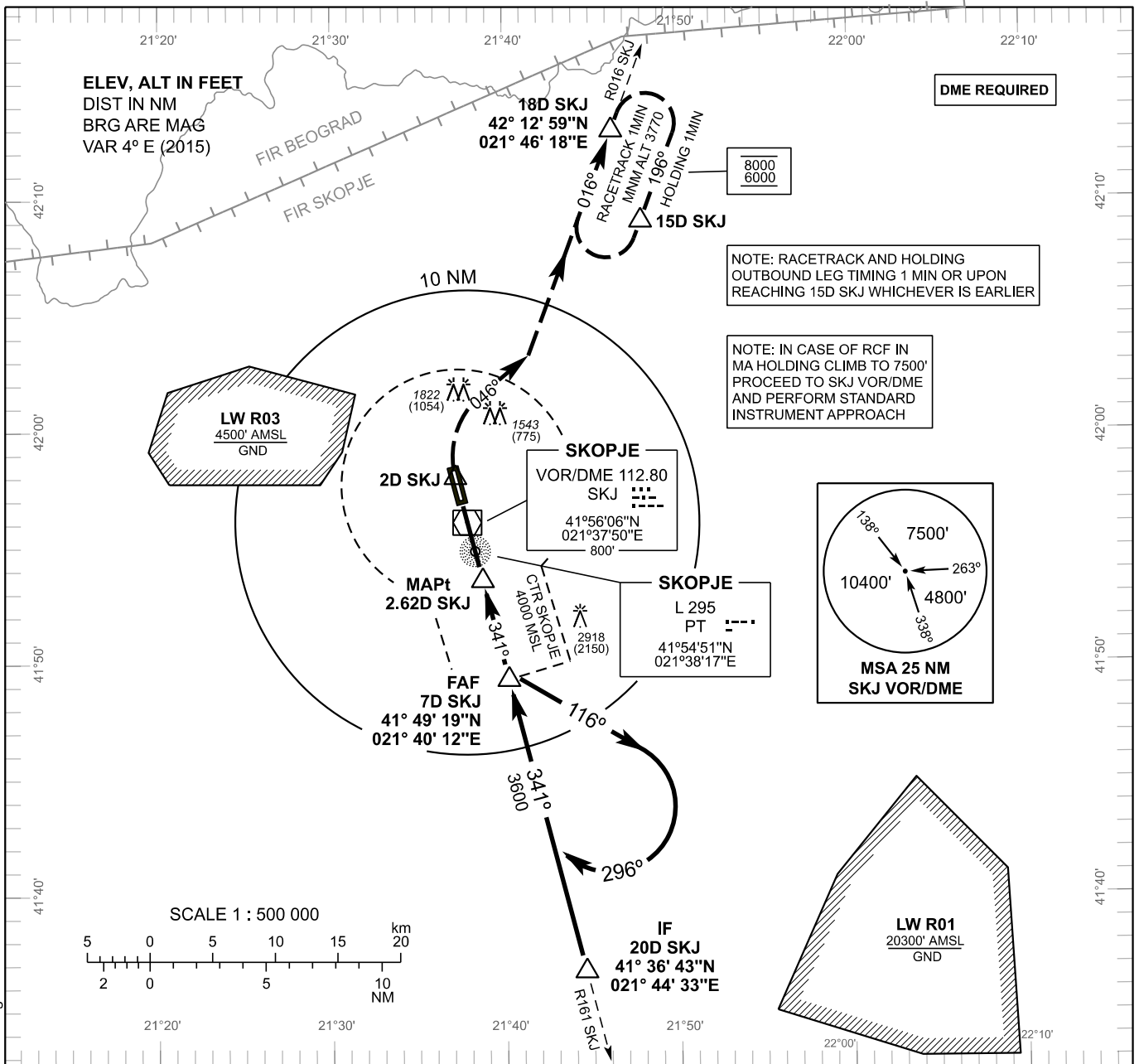
INTENTIONALLY LEFT BLANK

**INSTRUMENT
APPROACH
CHART - ICAO**

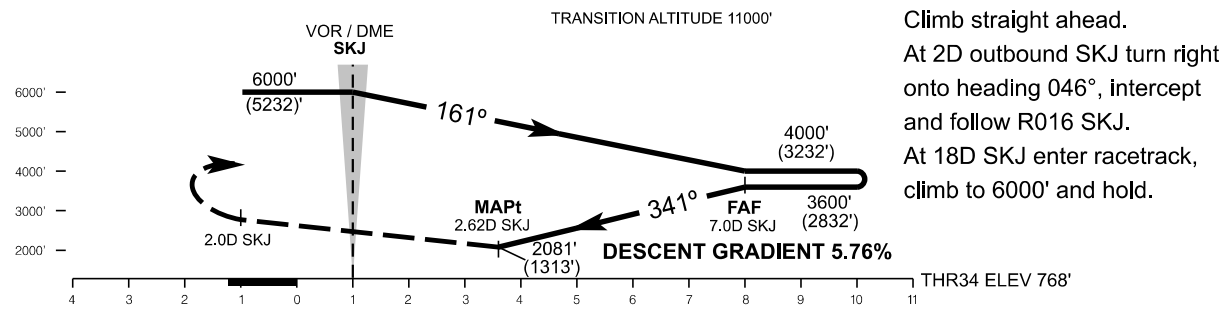
**AERODROME ELEV 781 FT
HEIGHTS RELATED TO
THR RWY 34 ELEV 768 FT**

| | |
|-------|---------|
| TWR | 118.500 |
| APP | 120.300 |
| RADAR | 120.300 |

**SKOPJE / SKOPJE Intl (LWSK)
VOR RWY 34
(ACFT CAT A, B)**



CHANGE: Notes "DME REQUIRED" and "Timing not authorized for defining the MAPt" added



| | | |
|-------|---------------|---|
| OCA/H | CATEGORY ACFT | |
| | A | B |
| | 2081' (1313') | |

| | | | | | | | |
|---|---------------|---------------|---------------|---------------|---------------|---------------|--------------|
| ALTITUDE (HEIGHT) RELATED TO DESCENT GRADIENT OF 5.76% ACCORDING TO VOR/DME SKJ | | | | | | | |
| DIST | 7D | 6D | 5D | 4D | 3D | 2D | 1D |
| ALT (HGT) | 3600' (2832') | 3250' (2482') | 2900' (2132') | 2550' (1782') | 2200' (1432') | 1850' (1082') | 1500' (732') |

Timing not authorized for defining the MAPt

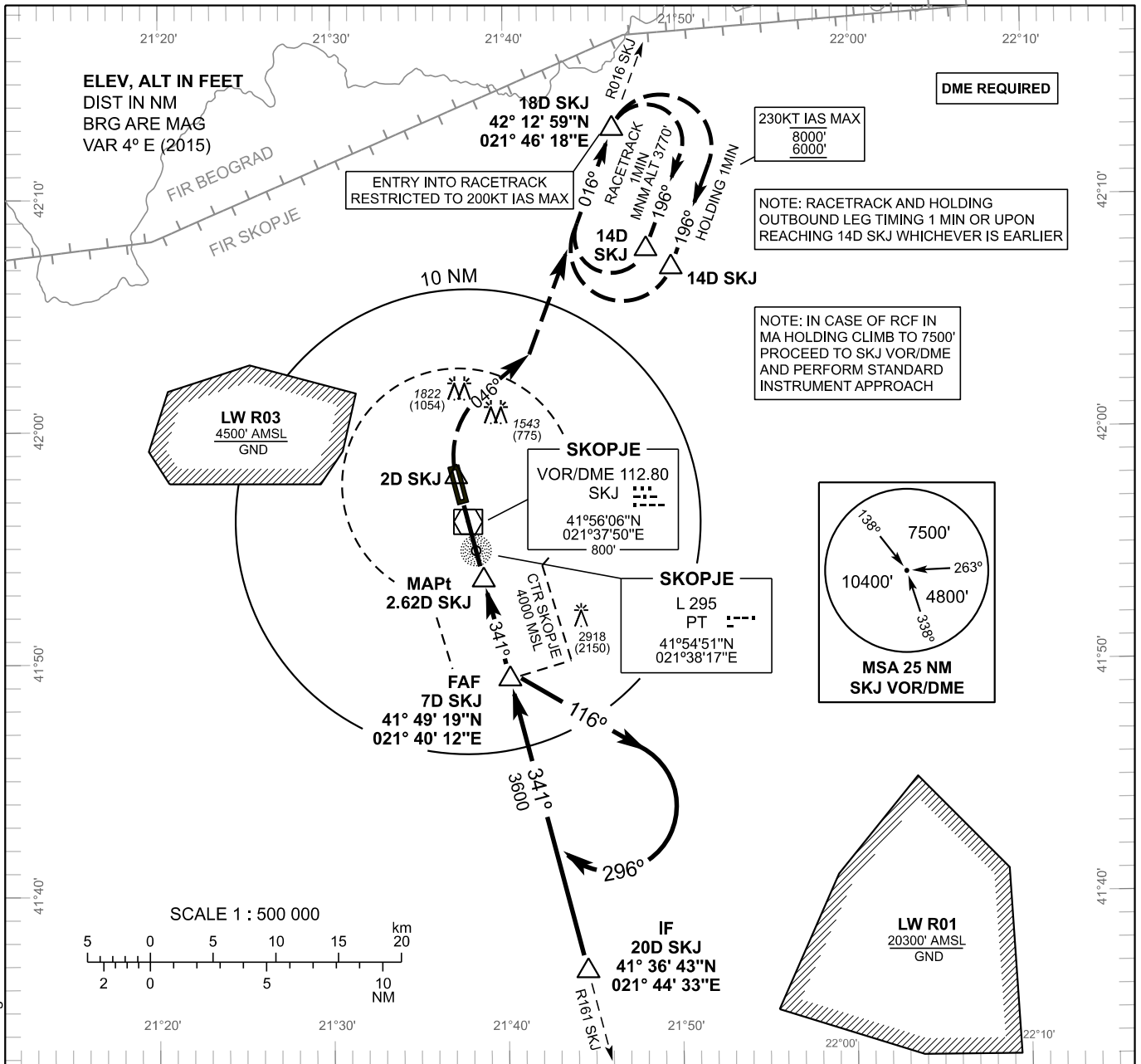
INTENTIONALLY LEFT BLANK

**INSTRUMENT
APPROACH
CHART - ICAO**

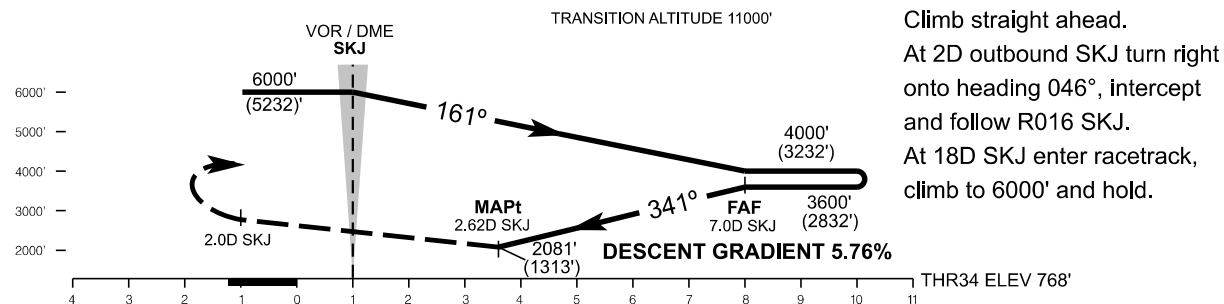
**AERODROME ELEV 781 FT
HEIGHTS RELATED TO
THR RWY 34 ELEV 768 FT**

| | |
|-------|---------|
| TWR | 118.500 |
| APP | 120.300 |
| RADAR | 120.300 |

**SKOPJE / SKOPJE Intl (LWSK)
VOR RWY 34
(ACFT CAT C, D)**



CHANGE: Notes "DME REQUIRED" and "Timing not authorized for defining the MAPt" added



| | | |
|-------|---------------|---|
| OCA/H | CATEGORY ACFT | |
| | C | D |
| | 2081' (1313') | |

| | | | | | | | |
|--|---------------|---------------|---------------|---------------|---------------|---------------|--------------|
| ALTIMETER (HEIGHT) RELATED TO DESCENT GRADIENT OF 5.76% ACCORDING TO VOR/DME SKJ | | | | | | | |
| DIST | 7D | 6D | 5D | 4D | 3D | 2D | 1D |
| ALT (HGT) | 3600' (2832') | 3250' (2482') | 2900' (2132') | 2550' (1782') | 2200' (1432') | 1850' (1082') | 1500' (732') |

Timing not authorized for defining the MAPt

INTENTIONALLY LEFT BLANK